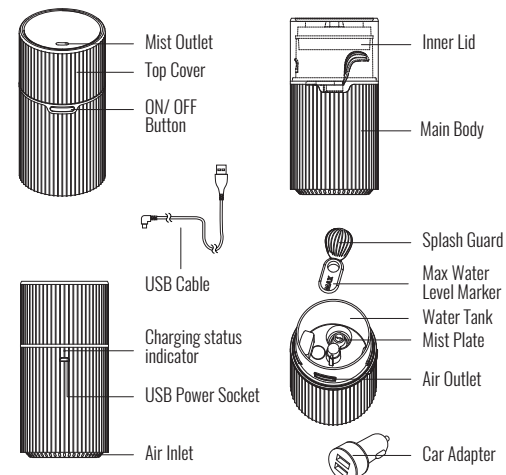
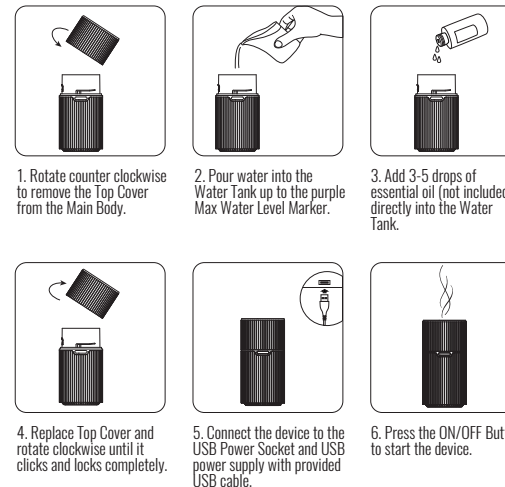


**dōTERRA® Pilot™**  
Ultrasonic Diffuser  
Instruction Manual

## Overview



## Instructions For Use



## Functions

### Continuous Mist Mode

1. Press the ON/OFF Button once to turn on the device. The default Continuous Mist Mode will work until water level becomes too low.
2. Press the ON/OFF Button twice to turn off the light while retaining the Continuous Mist Mode.
3. Press the ON/OFF Button three times to turn off both the mist and the light.

### Mist Mode Setting

1. In the Continuous Mist Mode, long press the ON/OFF Button for over 1.5 seconds to switch to Intermittent Mode (5 minutes ON/ 5 minutes OFF). Blue light flashes twice to confirm Intermittent Mode.
2. In the Intermittent Mist Mode, long press on the ON/OFF Button for over 1.5 seconds to switch to Continuous Mist Mode. Purple light flashes twice to confirm Continuous Mist Mode.
3. The selected light setting is retained when switching between the mist modes.

### \*Note:

1. Water Level Alert: When water level becomes too low, red light flashes twice and the mist will automatically shut off.

2. Battery Drained Protection: When working on battery, when the battery power becomes too low, the unit will automatically shuts off completely and red light flashes three times.
3. External Power Low/High Alarm: When the voltage of the connected USB power is too low or too high, the red light flashes ten times and the unit will automatically shut off completely.

## Battery Recharge

1. The Charging Status Indicator turns red while charging and turns green when fully charged when the external USB power is connected.
2. Run time for each full recharge is approximately 3 hours.
3. Charging time is approximately 3.5 hours from drained to full charge with 2Amp Power Adapter.

**Important:** As with most lithium-ion batteries, the device battery life will gradually decrease over time. After about 300 charge cycles, the device battery life will decrease to about 80% compared to the battery on a new device. This is normal and does not represent an issue with the device or with the battery.

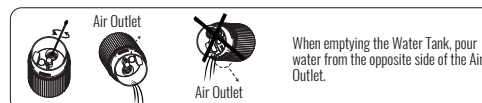
## Cautions

1. It is normal for vapor volume to vary with the type of water and essential oil used, humidity, and/or air temperature.
2. The product is designed for using 100 percent pure, natural essential oil. Chemical fragrance, spice, or impure essential oil used may cause product damage.
3. Clean the unit after each use. Use tap water, spring water or distilled water for washing and a soft cloth for wiping.
4. The device will turn off automatically when the water level becomes too low.

## Safety

1. Only use the product for the intended purpose.
2. Use only the USB Cable and Car Adapter included in the package or wall plug adapter sold separately.
3. Do not drain the water from the Air Outlet.
4. When storing the device or relocating it, turn the power off, unplug the device, empty the Water Tank, and clean the device.
5. Turn off the device and unplug immediately if there is any smoke or burning smell.
6. Do not fill the water to exceed the Max Water Level Marker.
7. Place the device on a flat and solid surface instead of uneven and/or unstable ones like carpets or rugs etc.
8. Refill with tap water, spring water or distilled water. Do not use mineral water.
9. Do not place the product in direct sunlight or close to a refrigerator, a fan, or other hot environment.
10. This product should not be operated by children unless supervised by an adult.
11. This product is not for medical purposes. DO NOT inhale the vapor directly from the Mist Outlet.

## Cleaning and Maintenance



Before cleaning, turn off the unit and unplug the USB cable. When emptying the Water Tank, pour water from the opposite side of the Air Outlet.

Clean the Water Tank and Mist Plate at least twice a week. Clean the Mist Plate in the Water Tank with a cotton cloth and neutral cleanser. Wash it with clean water and wipe it dry with cloth.

Warning: Use of corrosive or harsh chemicals may cause damage.

## Product Warranty

dōTERRA® One (1) Year Limited Warranty. dōTERRA's warranty obligation for this product is limited to the terms set forth below:

dōTERRA International, LLC ("dōTERRA") warrants this diffuser against defects in materials and workmanship under normal use for a period of ONE (1) YEAR from the date of purchase by the original end-user purchaser ("Warranty Period") provided the operation and maintenance strictly follow the instruction manual. If a defect arises and a valid claim is received within the Warranty Period, at its option and to the extent permitted by law, dōTERRA will either (1) ship a new replacement diffuser to original end-user, or (2) issue a refund based on the dōTERRA 30-day return policy. When a replacement or refund is given, the diffuser for which the replacement or refund is provided must be returned to dōTERRA prior to replacement or refund and becomes dōTERRA's property.

Please call 1-800-411-8151 for more information.

## Troubleshooting

Status	Cause(s)	Solution(s)
Startup Failure/Early Shutdown	1. Insufficient water 2. Improper power cable connection 3. Battery not charged	1. Fill water to the Max Water Level Marker. 2. Unplug the USB Cable and reset carefully. 3. Charge the battery.
No mist or abnormal mist	Water level exceeds the Maximum Water Level marker(Misting failure but normal light)	1. Make sure the water level does not exceed the Purple Max Water Level Marker. 2. Ensure that tap water or spring water is added.
	No air flows through the Air Inlet	1. The Air Inlet may be blocked. Check to make sure there is nothing blocking the inlet and that the device is placed on a hard surface. 2. Check the fan condition. If it is abnormal, please call dōTERRA.
Water Leakage	1. Oil contamination on Mist Plate 2. Air Inlet at the bottom of the diffuser is blocked	1. Please follow the instructions on cleaning and maintenance. 2. Blockage to the Air Inlet may influence the misting performance.
	1. Top Cover is not locked or missing 2. Temperature too low or too high/high humidity 3. Water spillage 4. Splash Guard is not installed	1. Replacing or adjusting the Top Cover may resolve the problem. 2. Adjust the room temperature or humidity. 3. Wipe the diffuser thoroughly and ensure the device is dry. Then restart the device. 4. Reinstall the Splash Guard.

## Features

1. Dimension: Dia 70mm\*141mm
2. Material: Polypropylene
3. Water Capacity: 45mL
4. Suggested Room Size: Up to 200 Sq ft
5. Continuous Operation:  
USB Powered: Up to 4 hours  
Battery Powered: Up 3 hours
6. Intermittent Operation (5 minutes ON/5 minutes OFF):  
USB Powered: Up to 8 hours  
Battery Powered: Up to 6 hours
7. Bright warm ambient light on and off
8. Automatic safety shut-off
9. Power Source: DC 5V 2A and 3.7V 3000mAh Battery



This appliance is not intended for use by persons (including children) with reduced physical, sensory or mental capabilities, or lack of experience and knowledge, unless they have been given supervision or instruction concerning use of the appliance by a person responsible for their safety. Children should be supervised to ensure that they do not play with the appliance.

This appliance can be used by children ages 8 years and above and persons with reduced physical, sensory or mental capabilities if they have been given supervision or instruction concerning use of the appliance in a safe way and understand the hazards involved. Children should not play with the appliance. Cleaning and user maintenance should not be made by children without supervision.

CAN ICES-1/NMB-1  
This ISM device complies with Canadian ICES-001

This device complies with part 18 of the FCC Rules (a) The interference potential of device or system: Operation is subject to the following two conditions: (1) This device may not cause harmful interference, and (2) this device must accept any interference received, including interference that may cause undesired operation.

(b) Maintenance of the system:  
NOTE: This equipment generates, uses and can radiate radio frequency energy and, if not installed and used in accordance with the instructions, may cause harmful interference to radio communications. However, there is no guarantee that interference will not occur in a particular installation. If this equipment does cause harmful interference to radio or television reception, which can be determined by turning the equipment off and on, the user is encouraged to try to correct the interference by one or more of the following measures:

- Reorient or relocate the receiving antenna.
- Increase the separation between the equipment and receiver.
- Connect the equipment into an outlet on a circuit different from that to which the receiver is connected.
- Consult the dealer or an experienced radio/TV technician for help.

model number: BY-PD01  
Manufactured for: dōTERRA Int., LLC  
389 S 1300 W, Pleasant Grove, UT 84062 USA