

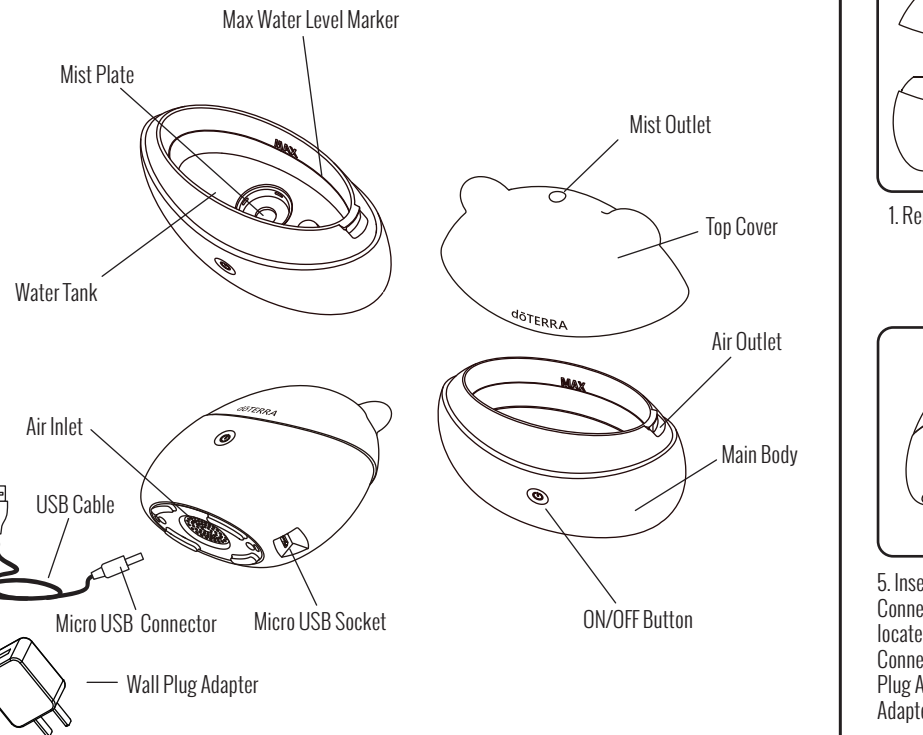


dōTERRA® Bear

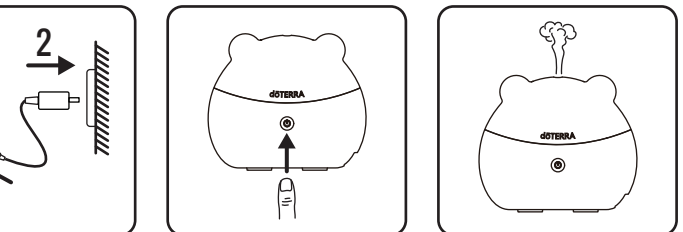
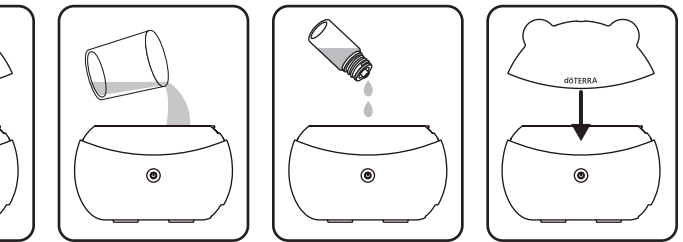
Ultrasonic Diffuser

Instruction Manual

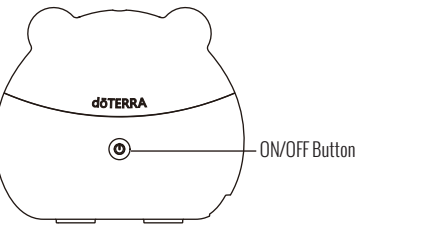
## Overview



## Instructions for Use



## Function



### ON/OFF Button:

1st press = Continuous Mist, Light On  
2nd press = Continuous Mist, Light Off  
3rd press = Off

### Mist Mode Setting

In the Continuous Mist Mode, long press the ON/OFF Button for over 2 seconds to switch to Intermittent Mode (5 minutes ON/ 5 minutes OFF). The light flashes 2 times to confirm Intermittent Mode.

In the Intermittent Mist Mode, long press on the ON/OFF Button for over 2 seconds to switch to Continuous Mist Mode. The light flashes 4 times to confirm Continuous Mist Mode.

The selected light setting is retained when switching between the mist modes.

## Cautions

1. It is normal for vapor volume to vary with the type of water and essential oil used, humidity and/or air temperature.
2. The product is designed for using pure, natural essential oil. Chemical fragrance, spice or impure essential oil used may cause product damage.
3. Clean the unit after each use. Use tap water, spring water, or distilled water for washing and a soft cloth for wiping.
4. The device will turn off automatically when the water level becomes too low.

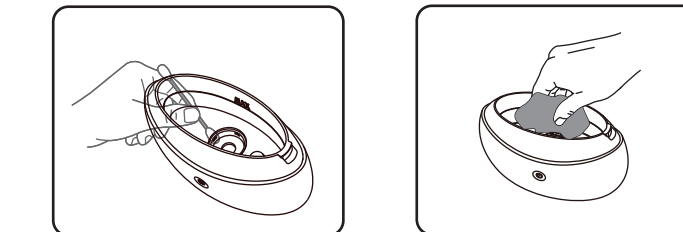
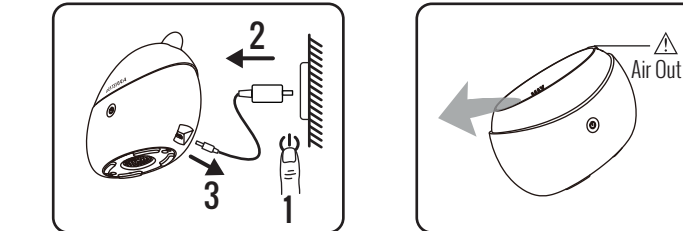
## Safety

Please follow the safety rules below while using the product:

1. Only use the product for the intended purpose.
2. Use only the USB Cable and Wall Plug Adapter included in the package.
3. Do not drain the water from the Air Outlet.
4. When storing the device or relocating it, turn the power off, unplug the device, empty the Water Tank and clean the product.
5. Turn off the device immediately if there is any smoke or burning smell.
6. Do not fill the water to exceed the Max Water Level Marker.
7. Place on a flat and solid surface instead of uneven and/or unstable ones like carpets or rugs etc.
8. Refill with tap water, spring water or distilled water. Do not use mineral water.
9. Do not move the product during its operation. Pull the Wall Plug Adapter instead of the cord to unplug.
10. Do not place the product in direct sunlight or close to a refrigerator, a fan or other hot environment.
11. This product should not be operated by children unless supervised by an adult.
12. This product is not for medical purpose. DO NOT inhale the vapor directly from the Mist Outlet.

## Cleaning & Maintenance

Before cleaning, turn the unit off and unplug the Wall Plug Adapter. When emptying the Water Tank, pour water from the opposite side of the Air Outlet.



Clean the Water Tank and Mist Plate at least twice a week. Clean the Mist Plate in the Water Tank with a cotton cloth and neutral cleanser. Wash it with clean water and wipe it dry with cloth.



**Warning:** Use of corrosive or harsh chemicals may cause damage. Essential oil should not come in contact with the exterior surface of the unit.

## Features

1. Dimension: 163 x 77 x 141.5mm
2. Material: PP + ABS + Silicone
3. Water Capacity: 100 ml
4. Suggested Room Size: approx. 25 sq.m
5. Continuous Operation: Up to 5 hours

6. Intermittent Operation: Up to 10 hours
7. Bright warm ambient light on and off
8. Automatic safety shut-off
9. Power Source: DC5V 5W

## Troubleshooting

Status	Causes	Solution(s)
Startup Failure/Early Shutdown	1. Insufficient water. 2. Improper power cable connection	1. Fill water to the Max Water Level Marker. 2. Unplug the Wall Plug Adapter plug and reset carefully.
No mist or abnormal mist	Water level exceeds the Maximum Water Level Marker.	1. Make sure the water level does not exceed the Max Water Level Marker.
	No air flows through the Air Inlet	1. The Air Inlet may be blocked. Check to make sure there is nothing blocking the inlet and that the device is placed on a hard surface. 2. Check the fan condition. If it is abnormal, please call dōTERRA.
	Oil contamination on Mist Plate	1. Please follow the instructions on cleaning and maintenance. 2. Blockage to the Air Inlet may influence the misting performance.
Water Leakage	1. Top Cover off-centered or missing. 2. Temperature too low or too high, high humidity.	1. Replacing or adjusting the Top Cover may resolve the problem. 2. Adjust the room temperature or humidity.

## Product Warranty

dōTERRA One (1) Year Limited Warranty. dōTERRA's warranty obligation for this product is limited to the terms set forth below:

dōTERRA warrants this diffuser against defects in materials and workmanship under normal use for a period of ONE (1) YEAR from the date of purchase by the original end-user purchaser ("Warranty Period") provided the operation and maintenance strictly follow the instruction manual. If a defect arises and a valid claim is received within the Warranty Period, at its option and to the extent permitted by law, dōTERRA will either (1) ship a new replacement diffuser to original end-user, or (2) issue a refund based on the dōTERRA 30-day return policy. When a replacement or refund is given, the diffuser for which the replacement or refund is provided must be returned to dōTERRA prior to replacement or refund and becomes dōTERRA's property.

Please call 1-800-411-8151 for more information.



This appliance is not intended for use by persons (including children) with reduced physical, sensory or mental capabilities, or lack of experience and knowledge, unless they have been given supervision or instruction concerning use of the appliance by a person responsible for their safety. Children should be supervised to ensure that they do not play with the appliance.

This appliance can be used by children ages 8 years and above and persons with reduced physical, sensory or mental capabilities if they have been given supervision or instruction concerning use of the appliance in a safe way and understand the hazards involved. Children should not play with the appliance. Cleaning and user maintenance should not be made by children without supervision.

This ISM device complies with Canadian ICES-001

This device complies with part 18 of the FCC Rules

(a) The interference potential of device or system: Operation is subject to the following two conditions:

- (1) This device may not cause harmful interference, and
- (2) this device must accept any interference received, including interference that may cause undesired operation.

(b) Maintenance of the system:

CAUTION: Changes or modifications not expressly approved by the party responsible for compliance could void the user's authority to operate the product.

(c) Simple measures that can be taken by the user to correct interference:

NOTE: This equipment generates, uses and can radiate radio frequency energy and, if not installed and used in accordance with the instructions, may cause harmful interference to radio communications. However, there is no guarantee that interference will not occur in a particular installation. If this equipment does cause harmful interference to radio or television reception, which can be determined by turning the equipment off and on, the user is encouraged to try to correct the interference by one or more of the following measures:

- Reorient or relocate the receiving antenna.
- Increase the separation between the equipment and receiver.
- Connect the equipment into an outlet on a circuit different from that to which the receiver is connected.
- Consult the dealer or an experienced radio/TV technician for help.

model number: GH2170B  
Manufactured for: dōTERRA Int'l., LLC  
389 S 1300 W, Pleasant Grove, UT 84062 USA