

CLASS SCRIPT



Love Your Skin from the Outside In

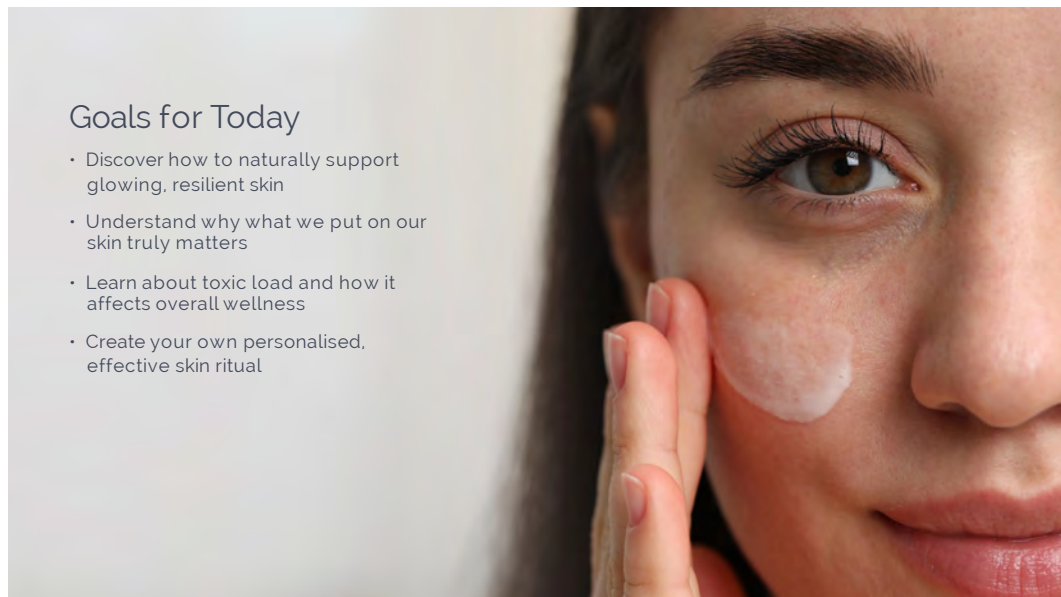
In Japanese culture, the skin is regarded not merely as a protective barrier, but as a vital organ that reflects overall health and well-being.

It is carefully nourished with great emphasis placed on gentle skincare rituals, and the use of natural yet powerful ingredients.

IKISE™ is a word born from Japanese influence, meaning 'from pure essential oils.'



Are you ready to have the best skin of your life? Raise of hands—who wants low tox, powerful skincare that supports you ageing in the right way for you?



Goals for Today

- Discover how to naturally support glowing, resilient skin
- Understand why what we put on our skin truly matters
- Learn about toxic load and how it affects overall wellness
- Create your own personalised, effective skin ritual

GOALS FOR TODAY

- Discover how to naturally support glowing, resilient skin
- Understand why what we put on our skin truly matters
- Learn about toxic load and how it affects overall wellness
- Create your own personalised, effective skin ritual

What is IKISE?

Welcome to the new era of skincare, where high-performance results meet holistic wellness.

IKISE™ is a skincare collection inspired by Japan's timeless beauty rituals, formulated with cutting-edge natural ingredients like humic shale and CPTG® essential oils.

This is skincare designed to nourish your skin's natural vitality. Not to fight age, but to support you in ageing better.



WHAT IS IKISE™?

Welcome to the new era of skincare—where high-performance results meet holistic wellness.

IKISE™ is a skincare collection inspired by Japan's timeless beauty rituals, formulated with cutting-edge natural ingredients like humic shale and CPTG® essential oils.

This is skincare designed to nourish your skin's natural vitality. Not to fight age, but to support you in ageing better.

What makes
IKISE™ different?



IKISE™ is created for those who want the best of both worlds—science and nature. It's high-performance skincare that's also low-tox and consciously crafted. With IKISE™, you no longer have to choose between purity and results.

But why does low-tox skincare matter? And what role do toxins actually play when it comes to our skin and overall wellness?

Let's take a closer look...



WHAT IS A TOXIN?

A “toxin” is any substance that places undue stress on the body.

WHAT IS TOXIC LOAD?

Everyday exposures—like stress, pollution, synthetic ingredients, and poor diet—can accumulate in the body over time. This buildup is referred to as “**toxic load.**”



WHAT PRODUCTS CONTRIBUTE TO TOXIC LOAD?

There are more than **1,000 identified Endocrine Disrupting Chemicals**

(EDCs)—and they typically fall into five main categories:

- **Plant-derived compounds**
- **Medical supplies and equipment**
- **Industrial chemicals**
- **Pharmaceutical products**
- **Household, personal care, and consumable items —**
WE WILL FOCUS ON PERSONAL CARE PRODUCTS TODAY

Daily Exposures

Women use an average of 12 personal care products that contain more than 160 chemicals.

Men use an average of 6 personal care products that have more than 85 chemicals.



Did you know...

On average, women use 12 personal care products daily, exposing themselves to **over 160 unique chemicals.**

Men aren't exempt—the average man uses **6 products,** containing **more than 85 chemicals.**

Meanwhile, **over 40 countries have banned 1,400 harmful chemicals** in cosmetics and personal care.

So where does that leave us?

It means many of us are unknowingly exposed to **endocrine-disrupting chemicals** every single day—just by following our normal routines. And most people have no idea... or don't know where to begin making changes.

60% of what you
put on your skin is
absorbed into your
blood stream.



Research shows that **up to 60% of what we apply to our skin can be absorbed directly into our bloodstream.**

That means every product we use matters.

From skincare and oral care to hair care, we're exposing ourselves—and our families—to dozens of chemicals daily. Over time, this can contribute to allergies, hormonal imbalances, reproductive challenges, and even more serious health concerns. But here's the good news: **you have a choice.**

That's where **IKISE™** comes in—a skincare range designed to nurture, not burden, your body. It's low-tox, high-performance, and powered by the best of nature and science.

Welcome to the new era of skincare, where high-performance results meet holistic wellness.

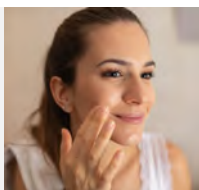
dōTERRA IKISE™ is a skincare collection inspired by Japan's timeless beauty rituals, formulated with cutting-edge, natural ingredients and a unique combination of Humic Shale Minerals and CPTG® essential oils for optimal absorption. This is skincare designed to nourish your skin's natural vitality. Not to fight age, but to support you in ageing better.

dōTERRA IKISE™ is crafted for individuals who value both science and nature, who want low-tox powerful skincare that performs.

With dōTERRA IKISE™, you no longer have to choose between purity and results.

What Makes dōTERRA IKISE Different?

- Rooted in Japanese skincare layering principles.
- Powered by CPTG® essential oils and proven actives.
- Targets hydration, firmness, brightness and texture.
- Free from toxins, synthetic fragrances and fillers.



WHAT IS IKISE™?

- IKISE™ represents a new standard in skincare - where performance meets purity.
- Inspired by Japanese beauty rituals, this range supports your skin's natural vitality. It's not about fighting age, but ageing better.
- Powered by CPTG® essential oils and proven natural actives, IKISE™ delivers visible results - hydration, brightness, firmness, without toxins or synthetic fillers.

What makes it different?

- Rooted in Japanese skincare principles.
- Clean, conscious, and effective.
- You no longer have to choose between wellness and results.

What is Humic Shale and Why It Matters in Skincare

Humic Shale is a natural, mineral-rich substance derived from ancient organic matter (plant material) that's been compressed over millions of years in the earth. It's typically found in clay or shale deposits and is used in wellness and skincare for its absorption, detoxifying and remineralising properties.

Key Skin Benefits of Humic Shale:

- **Mineral-Rich Nourishment:** Contains trace minerals like magnesium, calcium, and iron that help restore depleted skin.
- **Detoxification:** Binds to impurities and toxins, supporting a clearer, more refreshed-looking complexion.
- **Supports Cell Renewal:** May enhance skin turnover and improve clarity through its unique nutrient profile.
- **Balances the Skin:** Can help calm inflammation and improve texture.



One of IKISE™s standout hero ingredients is Humic Shale - a rare, mineral-rich compound derived from ancient plant matter that delivers powerful skin benefits.

- **Mineral-Rich Nourishment:** Packed with trace minerals like magnesium, calcium, and iron to help replenish and revitalise depleted skin.
- **Detoxification:** Binds to impurities and toxins, supporting a clearer, more refreshed-looking complexion.
- **Supports Cell Renewal:** Its unique nutrient profile may help boost skin turnover, revealing a fresher, more radiant complexion.
- **Skin Balance:** Known to calm visible inflammation, support a healthy skin microbiome, and improve overall texture and tone.

Understanding the Natural Origin Index:

What ISO 16128 Means for Your Skincare

When you see "ISO 16128 compliant" on an ingredient or product, it means it meets a global clean beauty standard for how natural a skincare ingredient truly is.

The Natural Origin Index is a scale from 0 to 1 that tells you how much of an ingredient comes from natural, renewable sources like plants or minerals, with 1.0 meaning 100% naturally derived. Ingredients that are compliant are not only sourced responsibly but processed in ways that are kind to both your skin and the planet.

This matters because not all "natural" claims are created equal. ISO 16128 helps ensure transparency, traceability, and eco-conscious formulation.



What is the Natural Origin Index?

- ISO 16128 is a global clean beauty standard that shows how natural an ingredient really is.
- It uses a scale from 0 to 1 - 1.0 means the ingredient is 100% naturally derived from sources like plants or minerals.
- It also ensures ingredients are processed in a way that's safe for your skin and better for the planet.
- This standard helps cut through vague "natural" claims by providing clear, trusted guidelines.
- It's about transparency, sustainability, and knowing what's really in your skincare.

Create Your dōTERRA IKISE Skin Ritual

CLEANSE

Step 1: Face Wash

A gentle cleanser that lifts impurities and rebalances the skin. Infused with Lime, Litsea & Petitgrain, and coconut-derived ingredients to leave skin soft and fresh.

TREAT

Step 3: Smooth & Rich Dual Serum

Two serums in one. Shake to blend exfoliating (PHA) and brightening (Frankincense + Vitamin C) powers to leave skin radiant and visibly smoother.

HYDRATE & PREP

Step 2: Smooth & Rich Lotion

Hydration meets skin preparation. This lightweight lotion layers beautifully to soften and allow deeper absorption of the next steps, featuring Niacinamide, Hyaluronic Acid and Gluconolactone.

SEAL & PROTECT

Step 4: Day & Night Face Cream

Rich but never heavy, this cream seals in moisture. With Buritan and Copaliba essential oils and rich botanical waxes, it leaves skin feeling deeply nourished and silky smooth.

OPTIONAL ADD-ONS

Booster Oil

Use after washing for added glow. With Geranium essential oil to nourish and prime skin.

Cleansing Balm

Perfect as Step 0 in the evening. Removes makeup and pollution gently while brightening and balancing sebum.

Eye Cream

Apply last. Targets fine lines and puffiness with Rose essential oil, Copper Gluconate, and botanical extracts.



The IKISE™ Skin Ritual is built on the timeless principles of **Japanese skincare**, where each step is designed to **feed, nourish, and honour the skin**—never strip or overwhelm it.

There are four simple yet purposeful steps:

1. **Cleanse** – Gently lift away impurities while respecting the skin’s barrier.
2. **Hydrate & Prep** – Layer in moisture and create the perfect canvas for active ingredients.
3. **Treat** – Deliver targeted ingredients for radiance, texture, and firmness.
4. **Seal & Protect** – Lock in hydration and shield the skin with a soft, nourishing veil.

This ritual isn’t just about skincare - it’s a **moment of meditation**, a way to start and end your day with intention. It’s a form of **simple, luxurious self-care** that helps you reconnect to yourself while treating your skin to exactly what it needs. It’s about slowing down, being present, and choosing products that work with your skin—not against it.

Skin Rituals by Skin Type

NORMAL SKIN

☀️ Face Wash ► Booster Oil ► Smooth & Rich Lotion ► Smooth & Rich Dual Serum ►
Day & Night Face Cream
🌙 Cleansing Balm ► Face Wash ► Smooth & Rich Lotion ► Smooth & Rich Dual Serum ►
Day & Night Face Cream + Intensive Eye Cream
Weekly: Use Booster Oil for a glow boost in the PM before Smooth & Rich Lotion.

DRY SKIN

☀️ Face Wash ► Smooth & Rich Lotion ► Smooth & Rich Dual Serum ► Day & Night Face Cream
🌙 Cleansing Balm ► Face Wash ► Smooth & Rich Lotion ► Smooth & Rich Dual Serum ►
Day & Night Face Cream + Intensive Eye Cream
Tip: Layer Smooth & Rich Lotion twice for intense hydration.

COMBINATION SKIN

☀️ Face Wash ► Smooth & Rich Lotion ► Smooth & Rich Dual Serum ► Day & Night Face Cream
🌙 Cleansing Balm ► Face Wash ► Smooth & Rich Dual Serum ► Day & Night Face Cream
Tip: Booster Oil on dry zones only before Smooth & Rich Lotion.



This is just a guide - a starting point to help you understand how the IKISE range can be tailored to your skin.

- You don't need to follow it rigidly. Think of it as a flexible ritual you can dip in and out of depending on what your skin needs that day.
- For example, if your skin's feeling dry, you might add in an extra layer of the Smooth & Rich Lotion or use the Booster Oil at night - even if that's not your usual routine.
- Or, if you're short on time in the morning, keep it simple and come back to the full ritual when you can.
- The real beauty here is that every product is designed to work beautifully together - so you can customise your ritual to suit your skin type, your lifestyle, and the seasons.
- Whether your skin is normal, dry, or combination, this guide gives you a foundation to build on, so your skincare feels supportive, not overwhelming.



Now it's time to meet the range...

Step 1 Natural Origin Index 100%

Cleansing Balm

Purpose: Gently remove makeup, sunscreen, and impurities while nourishing the skin.



Key Ingredients:

- Beeswax
- Sunflower Seed Wax
- Lime Essential Oil
- Litsea Essential Oil
- Petitgrain Essential Oil
- Ascorbic C (Vitamin C)
- Ascorbyl Glucoside (Natural Vitamin C derivative)

What It Does:

- Beeswax and Sunflower Seed Wax protect and soften the skin barrier.
- Vitamin C and Lime essential oil brighten and refresh.
- Transforms into a light milk when water is added, rinsing away cleanly.
- Leaves skin soft, cushioned, and replenished.

Tips & Tricks

- Massage onto dry skin, emulsify with water, and rinse.
- Ideal for the first cleanse in a double-cleansing routine.
- Gently dissolves makeup and impurities from the skin.
- Safe for eyelash extensions.




This is your first step in the cleansing ritual, designed to gently melt away makeup, sunscreen, and impurities without stripping the skin.

- It has a 100% Natural Origin Index and is packed with nourishing ingredients like Beeswax, Sunflower Seed Wax, and brightening essential oils like Lime and Litsea.
- As you massage it onto dry skin, it begins to soften and nourish. Once you add water, it transforms into a light milk that rinses away cleanly, leaving your skin soft, cushioned, and replenished.
- It's ideal for the first step in a double-cleansing routine and gentle enough for daily use.
- A great bonus: it's also safe to use on eyelash extensions, making it a perfect choice for those who want a thorough but gentle cleanse without compromising lash wear.
- This balm makes cleansing feel luxurious, while protecting and nourishing your skin at the same time.

Step 2 Natural Origin Index 99% Face Wash

Purpose: Gently Refreshing daily cleanser that gently purifies and rebalances.



Key Ingredients:


- Glycerin
- Lauric Acid
- Litsea + Lime essential Oil
- Coconut Derived Cleansers
- Petitgrain Essential Oil
- Jojoba Oil
- Hyaluronic Acid
- Ascorbic C (Vitamin C)
- Ascorbyl Glucoside (Natural Vitamin C derivative)

What It Does:

- Gentle foaming cleanser with Lauric Acid removes impurities while being kind to skin.
- Vitamin C helps brighten and even tone.
- Petitgrain, Lime & Litsea essential oils support clarity and freshness.
- Glycerin helps maintain hydration during cleansing.
- Prepares skin for optimal product layering.

Tips & Tricks

- Use morning and night, especially after Cleansing Balm.
- Massage in circular motions with lukewarm water.
- Rinse thoroughly and pat dry.
- A little goes a long way, just a small amount creates a rich, gentle foam.
- Add a drop of Booster oil to the cleanser if you have dry skin for extra moisture.



- It helps remove impurities with Lauric Acid, while Vitamin C and essential oils brighten and refresh.
- Glycerin and Hyaluronic Acid keep skin hydrated during the cleanse.
- Use after the Cleansing Balm for a complete double-cleanser.
- A small amount creates a rich, gentle foam - massage in and rinse well.
- Preps your skin beautifully for the next steps in the ritual.



Step 3 Natural Origin Index 94% Smooth & Rich Lotion

Purpose: Deeply hydrate, tone, and prepare skin for treatment.

Key Ingredients:

- Niacinamide
- Glycerin
- Gluconolactone (PHA)
- Frankincense Essential Oil
- Zinc Gluconate
- Copper Gluconate
- Humic Shale
- Ascorbic C (Vitamin C)
- Ascorbyl Glucoside (Natural Vitamin C derivative)

What It Does:

- Glycerin and Hyaluronic Acid draw in moisture and plump the skin.
- Niacinamide helps refine pores and improve tone.
- Vitamin C brightens and supports a healthy glow.
- Frankincense essential oil promotes skin rejuvenation.
- Enhances absorption of following products.

Tips & Tricks

- Pat into skin with hands or apply with a cotton pad as you would toner.
- Layer 2-3 times for added hydration.
- Use chilled for a refreshing toning boost.



This lotion is like a liquid treatment toner/essence - designed to deeply hydrate, tone, and prep your skin for what comes next.

- It combines humectants like Glycerin and Hyaluronic Acid to draw in moisture, plus Niacinamide and Vitamin C to refine pores and brighten.
- Frankincense essential oil supports skin rejuvenation and calm.
- You can pat it in with your hands or apply it like a toner with a cotton pad.
- For an extra hydration boost, layer it 2–3 times.
- It's a beautiful reset step that leaves your skin plump, glowing, and ready for your serums or creams.



Step 4 Natural Origin Index 95% Smooth & Rich Dual Serum

Purpose: Deliver powerful age-supportive and glow-enhancing benefits.

Key Ingredients:

- Zinc Gluconate
- Hyaluronic Acid
- Copper Gluconate
- Squalane
- Niacinamide
- Gluconolactone (PHA)
- Frankincense Essential Oil
- Humic Shale
- Ascorbic Acid (Vitamin C)
- Ascorbyl Glucoside (Natural Vitamin C derivative)

What It Does:

- Vitamin C brightens skin and boosts radiance.
- Niacinamide and PHA (Gluconolactone) refine skin texture and tone.
- Hyaluronic Acid deeply hydrates and smooths fine lines.
- Frankincense essential oil supports skin regeneration and firmness.
- Shake to activate bi-phase formula (essence + oil).

Tip & Tricks

- Shake well before use.
- Press gently into skin.
- Use morning and night for best results.
- Layer with Booster Oil for dry skin.
- The pink colour of the Dual Serum is due to Cyanocobalamin (Vitamin B12), which also helps soothe redness and irritation in the skin.



This is your glow-boosting, age-supportive step - combining hydration, brightening, and gentle renewal in one.

- It's a bi-phase formula - part essence, part oil - so give it a good shake before use to activate it.
- Vitamin C and Niacinamide help brighten and refine skin tone, while Hyaluronic Acid deeply hydrates and smooths.
- PHAs offer gentle exfoliation to renew and soften texture, and Frankincense supports firmness and regeneration.
- Use morning and night, and press it gently into the skin.
- For dry skin, it pairs beautifully with Booster Oil.
- Bonus: that soft pink colour comes from Vitamin B12, which also helps calm redness.

Step 5 Natural Origin Index 99%

Day & Night Face Cream

Purpose: Seal in hydration and protect the skin barrier for all-day radiance.



Key Ingredients:

- Glycerin
- Squalane
- Meadow Seed Oil
- Beeswax
- Buntan Essential Oil
- Gluconolactone (PHA)
- Niacinamide
- Zinc Gluconate
- Copper Gluconate
- Humic Shale
- Copaiba Essential Oil
- Ascorbic C (Vitamin C)
- Ascorbyl Glucoside (Natural Vitamin C derivative)

What It Does:

- Squalane and Meadow Seed Oil provide lightweight, long-lasting hydration.
- Buntan and Copaiba essential oils calm and support skin balance.
- Vitamin C and Vitamin E offer antioxidant protection and help even skin tone.
- Creates a moisture barrier while promoting elasticity and glow.

Citrus essential oils:

Citrus essential oils may contain compounds called furocoumarins, which can make the skin more sensitive to UV light. However, furocoumarin-free Buntan Essential Oil, used in the Day & Night Face Cream, has had those compounds removed.

This means:

- It won't cause photosensitivity, even when used during the day.
- It's safe for sun exposure, making it ideal in daytime skincare without needing to worry about reactions or avoiding sunlight.

Tips & Tricks

- Apply after Dual Serum both morning and night.
- Warm between fingers and press into skin.
- Add Booster Oil for extra richness when your skin needs a little extra love.




This is your final step - designed to seal in hydration, protect the skin barrier, and deliver long-lasting glow.

- It features lightweight hydrators like Squalane and Meadow Seed Oil, along with antioxidant-rich Vitamin C and E for even tone and skin resilience.
- Buntan and Copaiba essential oils help calm and balance the skin.
- Despite containing citrus, the Buntan oil used here is furocoumarin-free, so it's safe for daytime use and sun exposure.
- Use it morning and night after the Dual Serum. Warm between your fingers and press into the skin.
- Add a drop of Booster Oil for extra nourishment on dry or sensitive days.

Step E Natural Origin Index 93%

Eye Cream

Purpose: Refresh and rejuvenate the delicate eye area.



Key Ingredients:


- Glycerin
- Squalane
- Beeswax
- Shea Butter
- Rose Essential Oil
- Zinc Gluconate
- Copper Gluconate
- Arnica
- Ascorbic C (Vitamin C)
- Ascorbyl Glucoside (Natural Vitamin C derivative)

What It Does:

- Copper and Zinc Gluconate support elasticity and reduce the appearance of fine lines.
- Rose essential oil helps hydrate and brighten.
- Squalane and Beeswax offer soothing moisture without heaviness.
- Arnica calms puffiness and reduces signs of fatigue.

Tips & Tricks

- Tap gently with your ring finger around the orbital bone.
- Store in the fridge for extra de-puffing effect.
- Use under makeup for a smoother finish.
- Apply to smile lines as a brightening boost.



This step is all about refreshing and rejuvenating the delicate eye area.

- It's formulated with Copper and Zinc Gluconate to support elasticity and reduce the look of fine lines.
- Rose essential oil brightens, while Arnica helps calm puffiness and signs of fatigue, perfect for tired eyes.
- Squalane, Beeswax, and Shea Butter deliver soothing moisture without feeling heavy.
- Tap gently around the orbital bone using your ring finger—morning and night.
- You can also keep it in the fridge for a de-puffing boost or apply under makeup for a smoother finish.
- For an extra glow, try it on smile lines too.

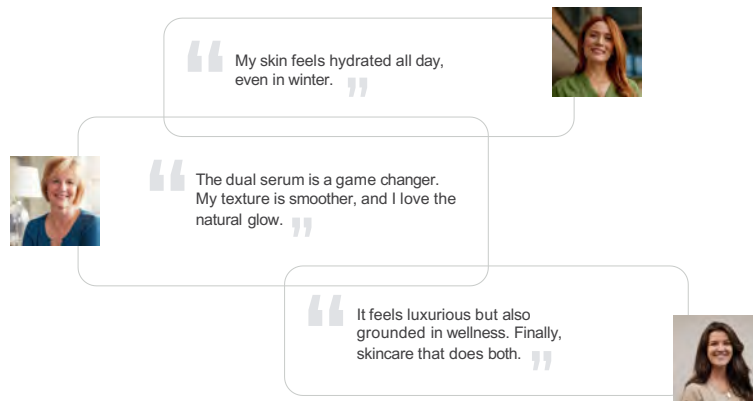
Ingredients

INGREDIENT	SKIN BENEFITS	FOUND IN
Hurufi Shale	Rich in minerals, detoxifies, supports skin renewal and clarity	Booster Oil, Smooth & Rich Lotion, Dual Serum, Day & Night Face Cream, Eye Cream, Cleansing Balm
Frankincense Essential Oil	Reduces fine lines, calms, supports cell regeneration	Smooth & Rich Lotion, Dual Serum
Geranium Essential Oil	Balances oil, tones skin, encourages glow	Booster Oil
Rubus Essential Oil	Purifies skin, promotes clarity, uplifts mood Furocoumarin-free, which makes it sun safe	Day & Night Face Cream
Linum Essential Oil	Brightens complexion, tones, offers an energising aroma	Cleansing Balm, Face Wash
Oliva Essential Oil	Clarifies, tones skin, antioxidant-rich	Cleansing Balm & Face Wash
Helianthus Essential Oil	Balances sebum, calms the skin and mind	Cleansing Balm & Face Wash
Rose Essential Oil	Smooths texture, hydrates deeply, supports mature skin	Intensive Eye Cream
Ascorbic Acid (Vitamin C)	Brightens skin, supports collagen production, reduces signs of ageing	All products
Ascorbyl Glucoside (Natural Vitamin C)	Gentler on the skin—ideal for sensitive or reactive skin; brightens and supports skin tone	All products
Vitamin E (Tocopherol)	Antioxidant protection, nourishes deeply, supports skin repair	Booster Oil
Niacinamide (Vitamin B3)	Refines pores, evens tone, improves elasticity, soothes skin	Smooth & Rich Lotion, Dual Serum, Day & Night Face Cream
Hyaluronic Acid / Sodium Hyaluronate	Deep hydration, plumps skin, improves elasticity	Smooth & Rich Lotion, Dual Serum, Face Wash

INGREDIENT	SKIN BENEFITS	FOUND IN
Glucosylated (PMA)	Gentle exfoliation, hydrates, supports smoother texture	Smooth & Rich Lotion, Dual Serum
Zinc Gluconate	Calms, soothes, supports healing, regulates oil production	Booster Oil, Smooth & Rich Lotion, Dual Serum, Day & Night Face Cream, Eye Cream
Copper Gluconate	Boosts firmness and collagen support	Booster Oil, Smooth & Rich Lotion, Dual Serum, Day & Night Face Cream, Eye Cream
Squalene	Mimics natural skin oils, softens, improves elasticity	Dual Serum, Day & Night Face Cream, Eye Cream
Argan Oil	Deeply conditions, antioxidant-rich, softens skin	Booster Oil
Meadow Seed Oil	Seals in moisture, supports smooth texture	Day & Night Face Cream
Jojoba Oil	Balances oil production, soothes skin, mimics sebum	Face Wash
Apricot Kernel Oil	Softens and nourishes skin	Booster Oil
Shea Butter	Richly nourishes, soothes inflammation	Intensive Eye Cream
Beeswax	Creates a breathable barrier, locks in hydration	Cleansing Balm, Day & Night Face Cream, Eye Cream
Sunflower Seed Wax	Helps structure balm and soften skin barrier	Cleansing Balm
Glycerin	Attracts moisture, softens and hydrates	Smooth & Rich Lotion, Day & Night Face Cream, Face Wash, Eye Cream
Arnica	Calms puffiness and reduces signs of fatigue	Intensive Eye Cream
Cyanocobalamin (Vitamin B12)	Brightens, supports skin repair, gives pink hue	Dual Serum
Saccharomyces/ Cornella Ferment	Enhances absorption, soothes skin, supports renewal	Smooth & Rich Lotion, Day & Night Face Cream
Cook Seed Extract	Supports hydration and texture	Smooth & Rich Lotion, Dual Serum, Day & Night Face Cream

- You don't need to be an expert or memorise every ingredient to confidently talk about these products.
- This ingredient table is here to help you understand what's inside each formula and why it matters - making it easier to share with customers or team members.
- Each ingredient has a purpose, whether it's calming, brightening, hydrating, or protecting the skin.
- You'll see powerful botanicals like Frankincense, Rose, and Geranium alongside science-backed actives like Niacinamide and Hyaluronic Acid.
- Use this as a reference tool. It's perfect for building product knowledge over time and giving you that extra confidence when questions come up.
- Think of it as your behind-the-scenes guide to the benefits that make IKISE™ so effective.

Real People, Real Results.



These testimonials speak volumes.

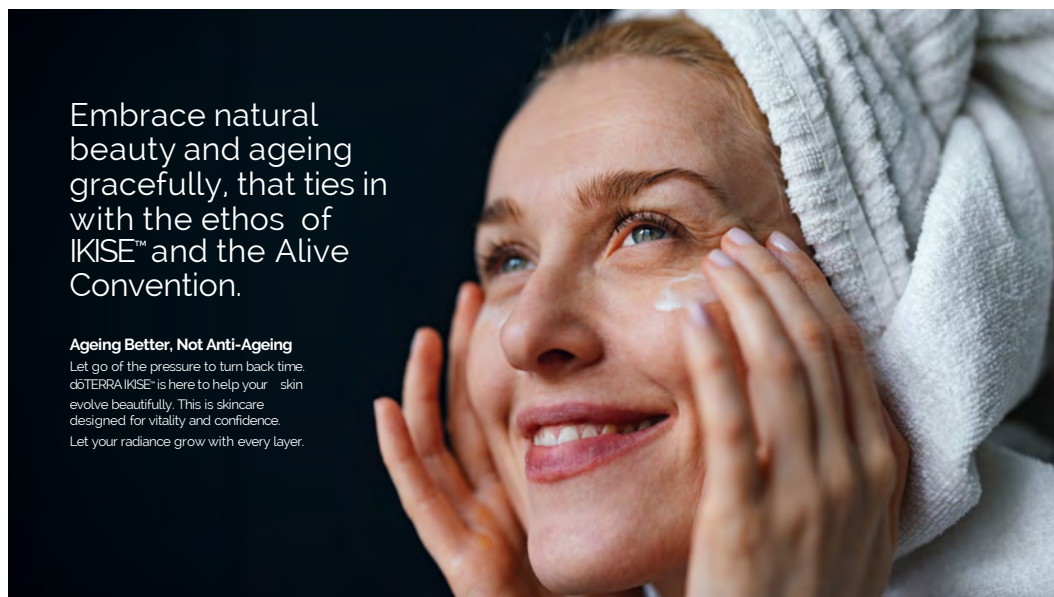
We're seeing both men and women using IKISE™ and experiencing real, visible results. It's more than just a skincare line - it's a way people are choosing to invest in themselves.

From hydration that lasts all day, even in winter...

To smoother texture, radiant glow, and that luxurious-yet-grounded feel - IKISE™ is striking a powerful balance between performance and wellness.

These stories reflect what we all want: skincare that works, feels good, and supports us in showing up as our best selves.

Encourage your audience to ask themselves -
"What could this look like for me?"



Embrace natural beauty and ageing gracefully, that ties in with the ethos of IKISE™ and the Alive Convention.

Ageing Better, Not Anti-Ageing

Let go of the pressure to turn back time. doTERRA IKISE™ is here to help your skin evolve beautifully. This is skincare designed for vitality and confidence. Let your radiance grow with every layer.

This image captures what IKISE™ is all about - **real people of all ages, glowing with confidence.**

It's not about perfection. It's not about reversing time. It's about showing up with vitality, authenticity, and skin that reflects how well you're caring for yourself.

Let's release the pressure to look younger and instead focus on **ageing better** - with grace, intention, and self-respect.

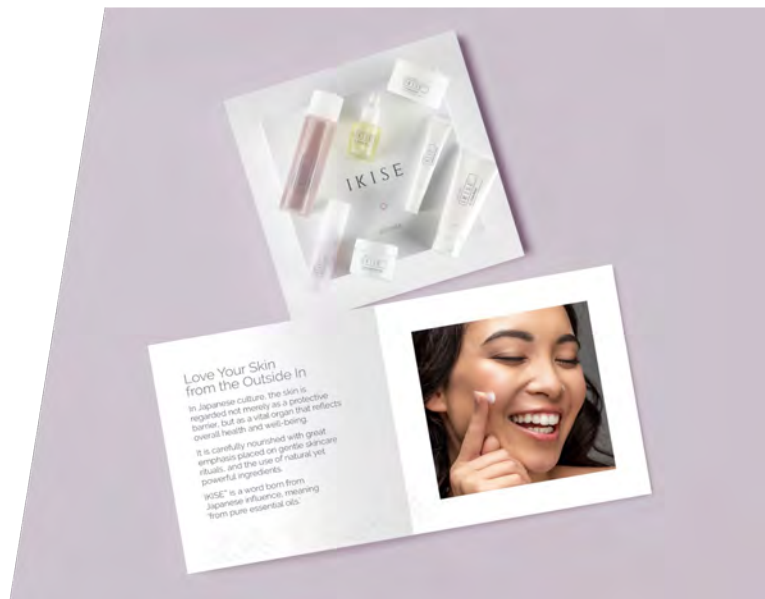
IKISE™ invites you to embrace your natural beauty and let your radiance grow... with every layer.

Call to Action:

So, what are you waiting for?

Start your IKISE™ ritual today and experience what skincare can feel like when it's aligned with your wellness values.

Download the
IKISE™ ebook



Once you start your IKISE™ journey, you're not on your own - there's plenty of support waiting for you.

You've got access to me, and dōTERRA has created a range of beautiful resources to guide you every step of the way.

You'll also receive a digital eBook that recaps much of what we've covered today - perfect for when your products arrive and you're ready to begin your ritual with confidence.